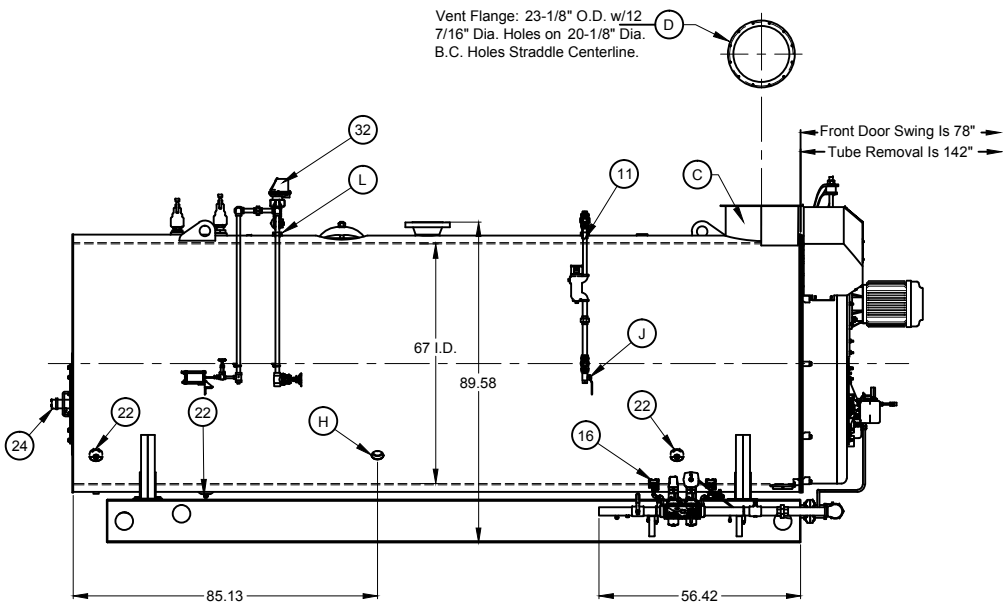


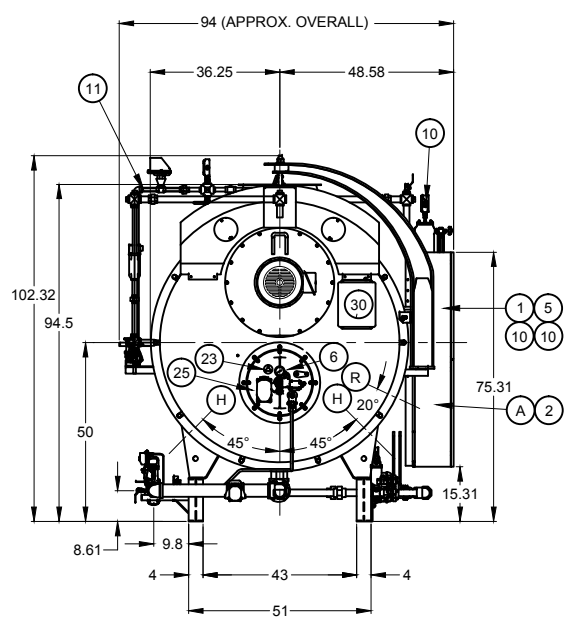
MAJOR COMPONENTS				SERVICE CONNECTIONS		NOTES
1	Control Panel	21	N/A	A	Electric - Main Power Supply- 460 / 3 / 60	* Boiler is Designed and Constructed in Accordance with the ASME Boiler and Pressure Vessel Code - Section 1 High Pressure Boiler * This Unit Complies with Insurance Underwriters Requirement for None Specified * The Boiler Package is painted with High Temperature Light Blue Enamel * The Burner Operation is Full Modulating * The Boiler Burner Package Has A UL Label  This Boiler Is Provided with: 1. Control Circuit Transformer 2. Welded End Caps on Baserails
2	Entrance Panel	22	Handholes (6) 3.25" x 4.5"	B	N/A	
3	Blower Motor - 20 HP	23	Front Sight Port	C	Exhaust Vent Pipe - 20" OD	
4	Air Compressor - 5 HP	24	Rear Sight Port	D	Vent Flange (See Detail)	
5	Combustion Safeguard Control - CB780E	25	Burner	E	Steam Outlet - 6" 300# R.F. Flange	
6	Flame Scanner- Infrared	26	Alarm	F	N/A	
7	Pressure Control - Operating Limit	27	Low Fire Hold Control	G	N/A	
8	Pressure Control - High Limit (Manual Reset)	28	N/A	H	Feedwater - (2) 2.0 NPT	
9	Pressure Control - Modulating	29	N/A	I	Bottom Blowdown - (2) 1.5 NPT	
10	Main Low Water Column - Levelmaster II	30	Front Head Junction Box	J	Water Column Blowdown - 0.75 NPT	
11	Auxiliary Low Water Cutoff - Warrick 3C-2	31	Bottom Blowdown Piping	K	Gauge Glass Blowdown - 0.25 NPT	
12	Steam Gauge	32	Surface Blowoff Piping	L	Surface Blowoff - 1.0 NPT	
13	N/A	33	N/A	M	N/A	
14	Stack Thermometer	34	N/A	N	Main Gas - 2.0	
15	Safety Valve (2) Set @ 150#	35	N/A	O	Minimum Inlet Gas Pressure Required is 55" w.c. Maximum Inlet Gas Pressure Required PSI: TBD Rating - 12,246 (cfh) MBtu	
16	Gas Train	36	N/A	P	Oil Inlet - 0.75 NPT ( 75 PSI Required at Inlet) Rating - 87.5 gph	
17	Fuel Oil Piping Terminal	37	N/A	Q	Oil Outlet - 0.75 NPT	
18	Fuel Oil Pump Assembly	38	N/A	R	Chemical Feed - 1.0 NPT	
19	Manway 12" x 16"	39	N/A	S	Safety Valve - (1) Kunkle 6010GFE 1.25X1.5 FPT (Outlet)	
20	N/A	40	N/A	T	Safety Valve - (1) Kunkle 6010HGE 1.5X2.0 FPT (Outlet)	

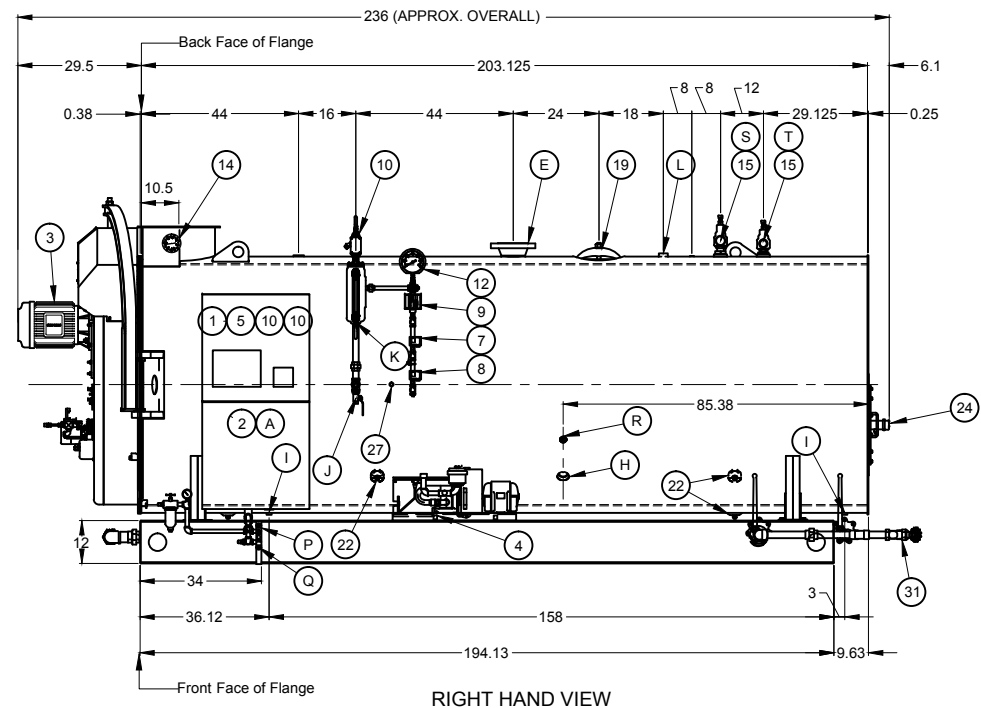
BOILER SPECIFICATIONS	
Boiler Designation - CBEX ELITE 200 300	
Design Pressure - 150 ST	
Design Rating -300 hp	
Emissions - 60 ppm	
Fuel(s) - No. 2 Oil and Natural Gas	
Steam Capacity - 10,350 # stm/hr @212 deg F	
Fireside Heating Surface - 860 Sq. Ft.	
Dry Weight - 18,540 LB	
Normal Water Weight - 12,190 LB	
Gallons (Operating) - 1,462	
Code Compliance - N/A	



LEFT HAND VIEW



FRONT VIEW



RIGHT HAND VIEW

THIS DRAWING IS PROPERTY OF CLEAVER-BROOKS DIVISION IT IS SUBJECT TO CHANGE WITHOUT NOTICE, AND IS NOT TO BE COPIED OR USED IN ANY WAY DETRIMENTAL TO THE COMPANY.

**CAUTION**

DIMENSIONS SHOWN ARE APPROXIMATE AND SHOULD NOT BE USED IN RESTRICTIVE LAYOUTS OR TO PREFABRICATE ASSEMBLIES UNLESS CLEAVER-BROOKS HAS BEEN CONSULTED. IT IS STRONGLY RECOMMENDED THAT THE CUSTOMER REQUEST AS-BUILT CERTIFIED DRAWINGS FOR THESE CASES.

**WARNING**

LIFTING LUGS PROVIDED ON THE VESSEL SHALL ONLY BE USED TO LIFT THE VESSEL WHEN IT IS DRY.

**WARNING**

CHANGES, MODIFICATIONS OR ALTERATIONS ARE STRICTLY PROHIBITED.  
CHANGES TO THIS DRAWING AND SUBSEQUENT MODIFICATION OF EQUIPMENT COULD RESULT IN DAMAGE TO THE EQUIPMENT AND/OR SERIOUS PERSONAL INJURY.

PRELIMINARY

DIMENSIONAL DIAGRAM

SIZE D

SHT 01 OF 02

SCALE	N.T.S.
DATE	12/21/11
DRAWN	H L J
CHECKED BY	M S T

**CleaverBrooks**

MODEL	CBEX ELITE	FUEL	200	300	150ST	CAPACITY
SIZE	460	PHASE	3	60	3	N/A
INSURANCE		IDENTZ				INSURANCE
DRWG. NO. CBEX ELITE 300 HP 150						

LU  
D  
C  
B  
A